



FW5A Underground Multimec Truck

FW5A is a trackless device specially designed for underground services and is suitable for 3.5 × 3.5m mine tunnels. The multi-purpose service vehicle is used for underground services. Through special design, the driver's seat and occupants are equipped with safety belts. The multi-purpose service vehicle is particularly suitable for harsh working conditions, narrow, low and muddy work sites.

Better stability and simple operation can improve the safety of multi-function service vehicles, and wet brakes are more suitable for the complex and harsh working environment of the underground to ensure safety. The transport cab adopts an integrated frame structure to ensure overall stability. All walking surfaces are skid-proof to minimize the possibility of slipping and falling accidents.

The multifunctional service vehicle is a quick-change universal chassis. A universal chassis plus a compartment with different functions can provide a safe and economical transportation system and operating platform for manpower, materials, and fuel. The multifunctional series of equipment with different installations for sliding installation and sliding removal makes it the ideal solution for mining. The quick change function meets its various transportation needs. As long as there is a multifunctional chassis and the right car with different transportation functions, a safe and economic underground transportation system can be provided for manpower, materials, fuel, etc.



Main parameters

Carrying capacity	5 000 kg
Total Weight	9 000 kg
Dimensions (mm)	7185×1900×2150

Forward and backward speed

1st gear	4.3 km/h
2nd gear	9.4 km/h
3 levels	21.0 km/h

Data

Swing angle of front axle	±6 °
Steering angle	±40 °
Minimum ground clearance	250 mm
Gradeability	14 ° (25%)
Approach angle	15 °



Operating conditions and restrictions

ambient temperature -15 °C ~ +50 °C

Equipment design standards

GB 21500-2008 trackless tire-type mine transporter for underground mines safety requirements

JB / T 13429-2018 underground service vehicle

Motion transfer system

Power system

Diesel engine	DEUTZ D914L06
rated power	86.5 kW @ 2300 rpm
Number of cylinders	6 cylinder
cooling system	Air-cooled
Combustion principle	4-stroke direct injection engine
Intake air filter	Dry air filtration Pre-filtration + two-stage filtration
Electrical System	24 V
Emission Standards	Euro III
Silence Purifier	DOC+POC+silencer
Fuel tank volume	140 L

Torque converter

	Electronically controlled shift with buffer function
DANA 1201FT20321	Single-stage three-element With hydraulic pump drive Three forward gears

Axle (front axle)

Xingye Machinery	
Spring brake, hydraulic release	YR14 Using standard differential

Rigid axle

Axle (rear axle)

Xingye Machinery	
Spring brake, hydraulic release	YR14 Using standard differential

Rigid axle

Tire

Model	10.00-20
Brand	TIANLI/QIANJIN

Hydraulic system

composition	Work coordination and steering system Brake system, fuel system
Connector Standard	JIC standard
Hose Standard	GB 3683
Hydraulic oil tank volume	140 L
Suction filtering accuracy	80 μm
Return oil filtration accuracy	10 μm

Steering hydraulics

Full hydraulic steering gear	Steering wheel
Two double-acting steering cylinders	operation
Steering hydraulic cylinder	2 pieces
Steering pump form	Gear-type fixed displacement pump

Brake hydraulic system

Features	Fully enclosed multi-disc wet brake, integrating work brake, parking brake, emergency brake, spring brake, hydraulic release
	Brake system performance meets EN ISO 3450, AS2958.1 and SABS 1589 standards

Driver operation

FW5A cab provides ample ergonomic operating space and ergonomically arranged operating table, which improves comfort and productivity.

Cab

ROPS certification according to ISO 3471

FOPS certification conforms to ISO 3449

Electrical System

Main configuration

Generator	28 V , 35 A
Accumulator	2×12 V, 100 Ah
Starter	24 V / 4 kW
Lighting and work lights	2 pieces in front rack 2 pieces in the rear rack
Alarm prompt	Low oil pressure alarm Rotating alarm light
Speaker configuration	standard

Included safety features

Fire Safety

Portable fire extinguisher	2kg 1PCS
----------------------------	----------

Energy isolation

Main power switch can be locked	standard
Trailer attachment	standard

Document

Standard Manual

Spare Parts Manual	Chinese or English
Instruction Manual and Maintenance Manual	Chinese or English
Label	Chinese or English

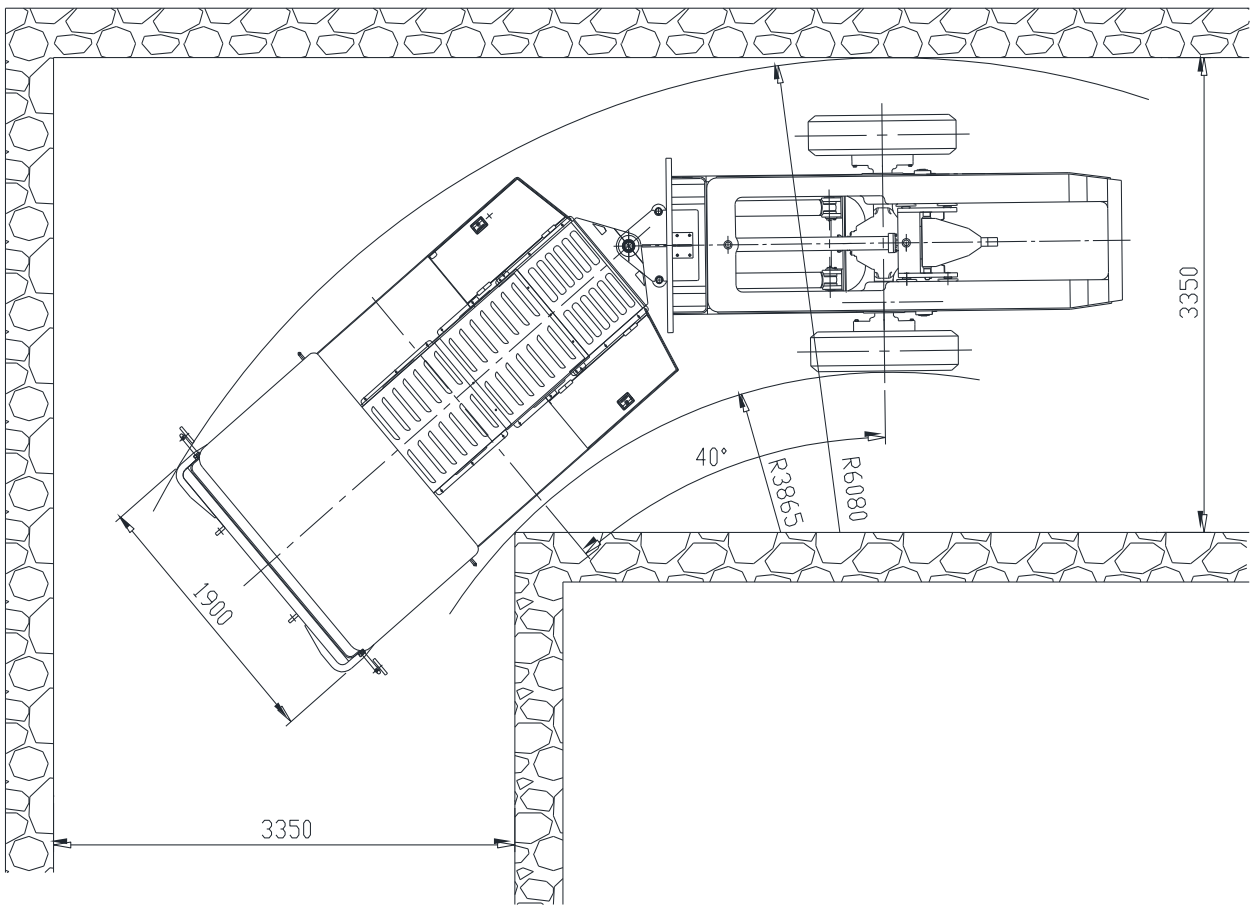
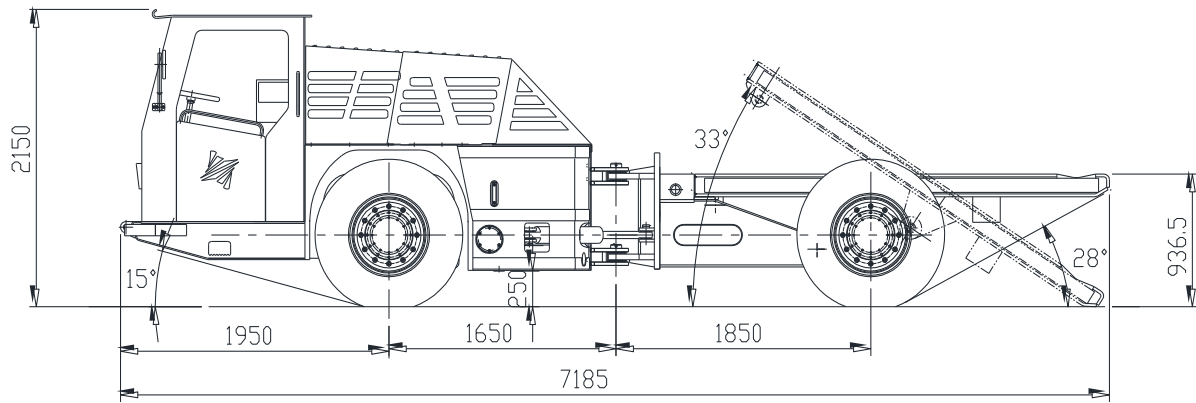
Optional electrical system configuration

Surveillance camera system

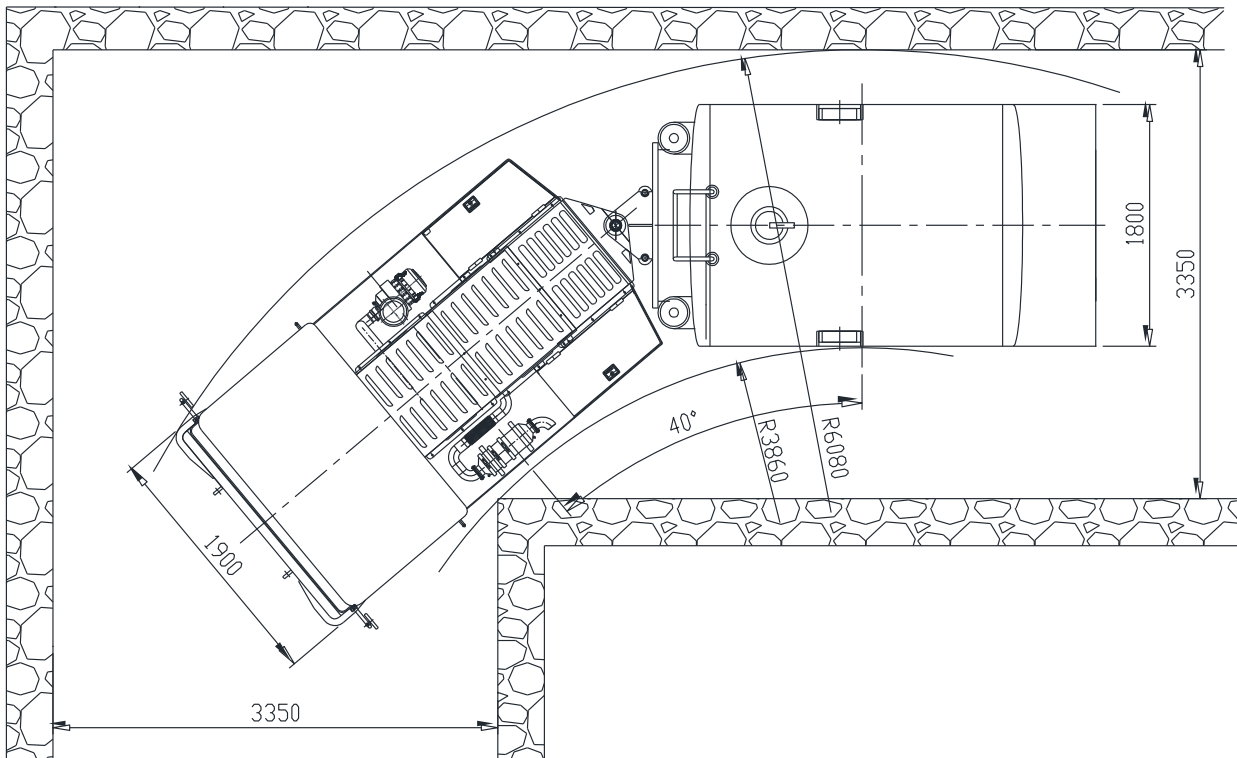
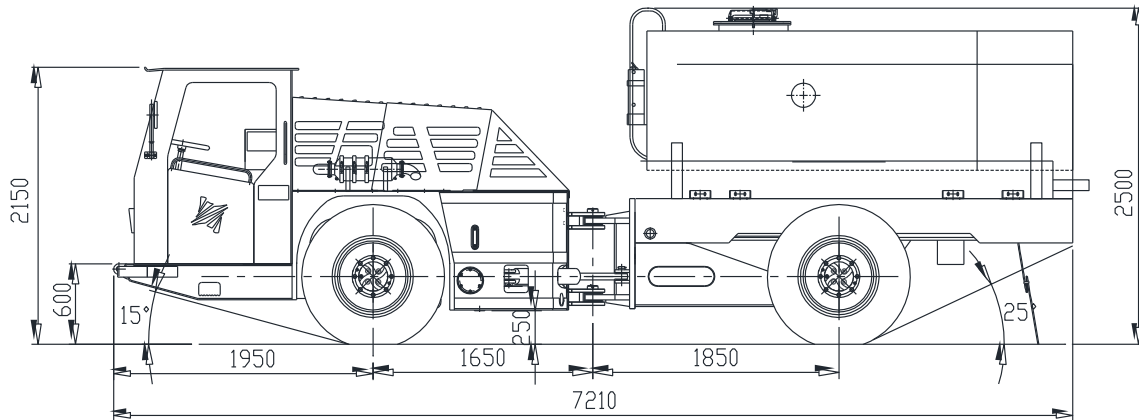




Dimensional drawing of universal chassis



Dimensional drawing of universal chassis tanker truck



Options

Optional compartment

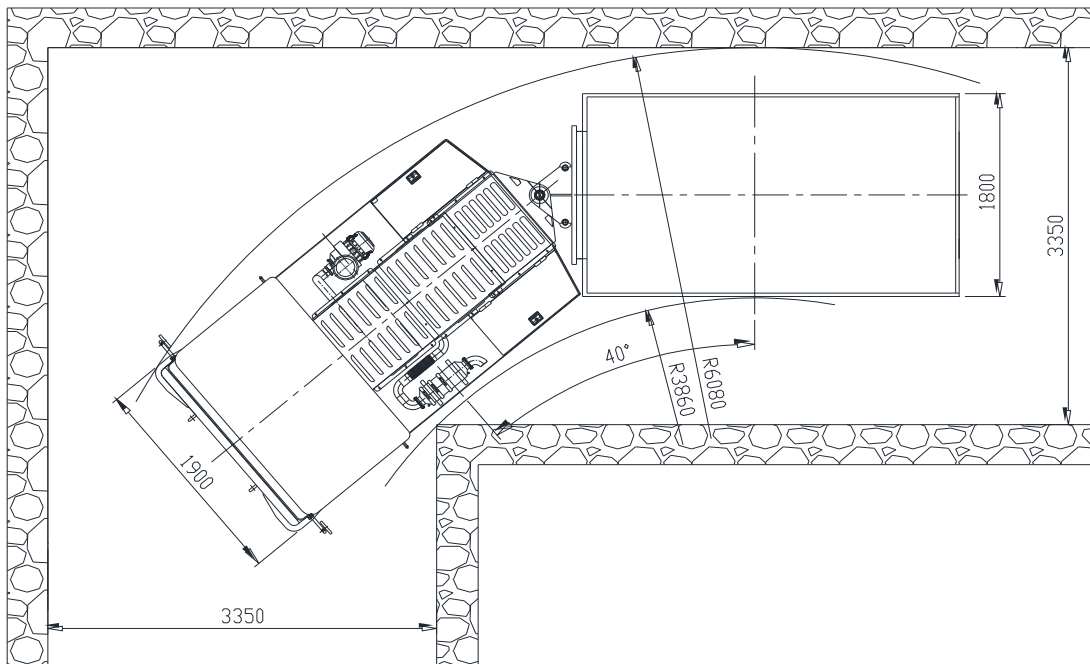
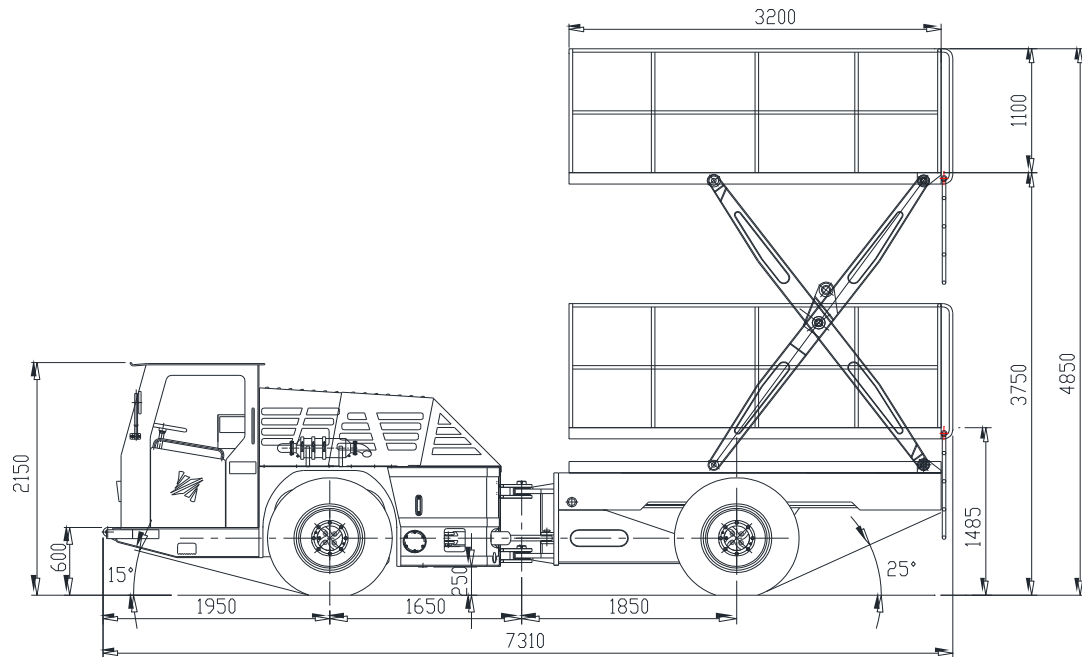
Oil tank

Main Technical Parameter

Volume: 4000 L

Fueling range: 30-45 L / min, refueling gun equipped with reel can stretch up to 14 m

Dimensional drawing of universal chassis lifting platform



Optional compartment

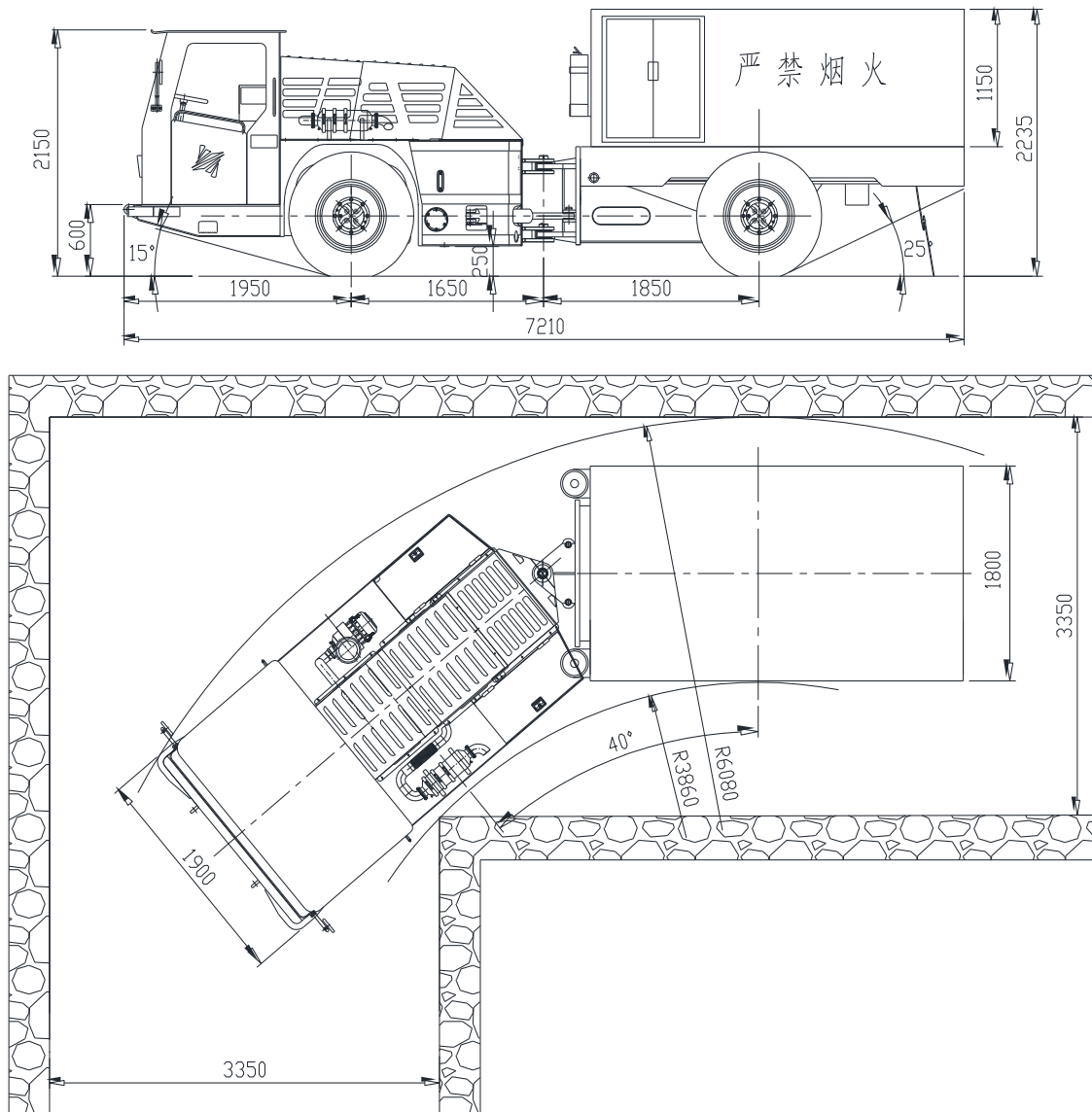
Scissor lift platform

The main technical parameters

Rated load: 2 T

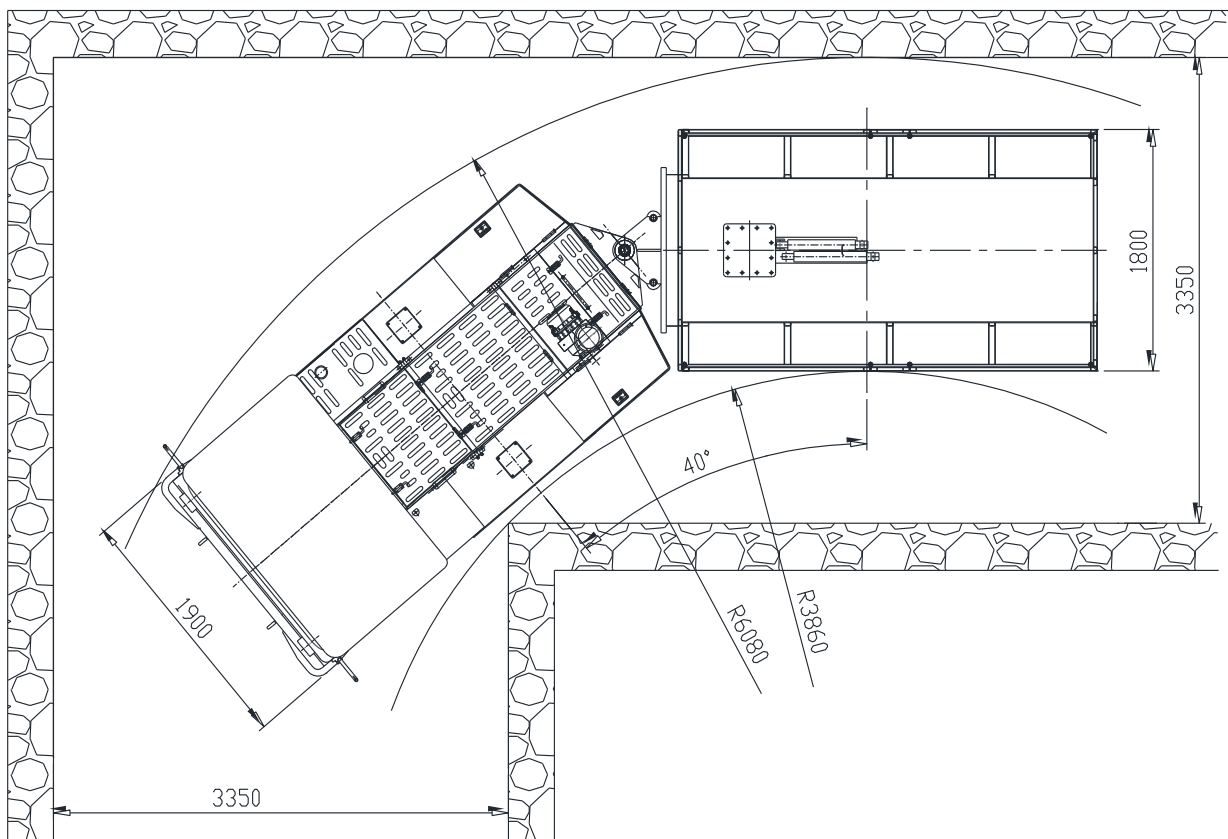
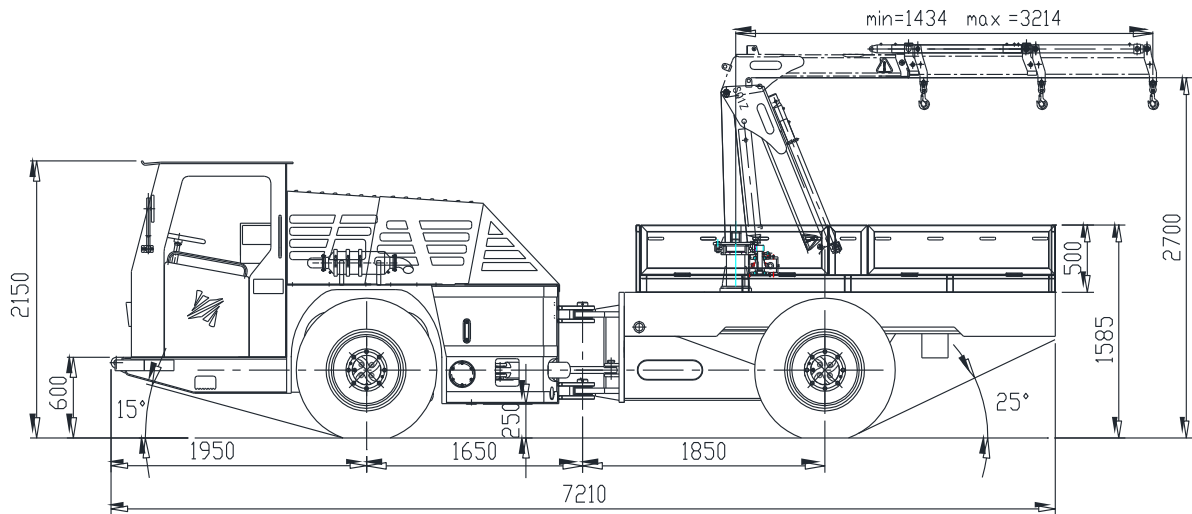
Lifting height: 3750 mm

Dimensional drawing of universal chassis explosive transport vehicle



Options
Optional compartment
Explosives carriage
The main technical parameters
Car volume: 4 m³

Dimensional drawing of general chassis material carrier



Options

Optional compartment

Maintenance compartment

The main technical parameters

Hoisting capacity: 1.4 T.m (optional)