



# XINGYE FW5D Underground Multimec Truck

FW5D is a trackless device specially designed for underground services and is suitable for 3.5 × 3.5m mine tunnels. The multi-purpose service vehicle is used for underground services. Through special design, the driver's seat and occupants are equipped with safety belts. The multi-purpose service vehicle is particularly suitable for harsh working conditions, narrow, low and muddy work sites.

Better stability and simple operation can improve the safety of multi-function service vehicles, and wet brakes are more suitable for the complex and harsh working environment of the underground to ensure safety. The transport cab adopts an integrated frame structure to ensure overall stability. All walking surfaces are skid-proof to minimize the possibility of slipping and falling accidents.

The multifunctional service vehicle is a quick-change universal chassis. A universal chassis plus a compartment with different functions can provide a safe and economical transportation system and operating platform for manpower, materials, and fuel. The multifunctional series of equipment with different installations for sliding installation and sliding removal makes it the ideal solution for mining. The quick change function meets its various transportation needs. As long as there is a multifunctional chassis and the right car with different transportation functions, a safe and economic underground transportation system can be provided for manpower, materials, fuel, etc.



### Main parameters

Carrying capacity	5 000 kg
Total Weight	9 500 kg
Dimensions (mm)	7485 × 1900 × 2150

### Forward and backward speed

1st gear	4.3 km/h
2nd gear	9.4 km/h
3rd gear	21.0 km/h

### Passing data

Swing angle of front axle	±6 °
Steering angle	±40 °
Minimum ground clearance	250 mm
Gradeability	14 ° ( 25% )
Approach angle	12 °



## Operating conditions and restrictions

Ambient temperature -15 °C~+50 °C

## Equipment design standards

GB 21500-2008 trackless tire-type mine transporter for underground mines safety requirements

JB / T 13429-2018 underground service vehicle

## Motion transfer system

## Power system

Diesel engine

DEUTZ TCD2013L04

Rated power 120 kW @ 2300 rpm

Number of cylinders 4 cylinder

Cooling system Air-cooled

Combustion principle 4-stroke direct injection engine

Intake air filter Dry air filtration  
Pre-filtration + two-stage filtration

Electrical System 24 V

Emission Standards Euro III

Silence Purifier DOC + POC + Silencer

Fuel tank volume 160 L

## Torque converter and gearbox

Electronically controlled shift with buffer function

DANA 1201FT20321  
Single-stage three-element  
With hydraulic pump drive

Three forward and back gears

## Axle (front axle)

Xingye Machinery

Spring brake, hydraulic release YR14  
Using standard differential

Rigid axle

## Axle (rear axle)

Xingye Machinery

Spring brake, hydraulic release YR14  
Using standard differential

Rigid axle

## Tires

model 10.00-20

brand TIANLI/QIANJIN

## Hydraulic system

composition Work system, steering system  
Brake system, fuel system

Connector Standard JIC standard

Hose Standard GB 3683

Hydraulic oil tank volume 140 L

Suction filtering accuracy 80 μm

Return oil filtration accuracy 10 μm

## Steering hydraulics

Full hydraulic steering gear Two double-acting steering cylinders Steering wheel operation

Steering hydraulic cylinder 2pcs

Steering pump form Gear-type fixed displacement pump

## Brake hydraulic system

Features Fully enclosed multi-disc wet brake  
Set work brake, parking brake, emergency brake and one  
Spring brake, hydraulic release

The braking system performance meets the requirements of EN ISO 3450, AS2958.1 and SABS 1589.

### Driver operation

FW5D cab provides ample ergonomic operating space and ergonomically arranged operation table to improve comfort and productivity

### Cab

ROPS certification according to ISO 3471

FOPS certification conforms to ISO 3449

### Electrical System

#### Main configuration

Accumulator	2×12 V, 100 Ah
illumination	LED lights 2 pieces in front rack 2 pieces in the compartment
Speaker configuration	standard
sensor	Diesel, hydraulic oil level sensor Steering, braking system pressure sensor
monitor	IFM CR1083 7" LED
Controller	IFM CR2532 CPU 50 MHz

### Included safety features

#### Fire Safety

Portable fire extinguisher	2 kg 1 件
----------------------------	----------

#### Energy isolation

Main power switch can be locked	standard
Trailer attachment	standard

#### Document

#### Standard Manual

Spare Parts Manual	English
Instruction Manual and Maintenance Manual	English
Label	English

### Optional configuration

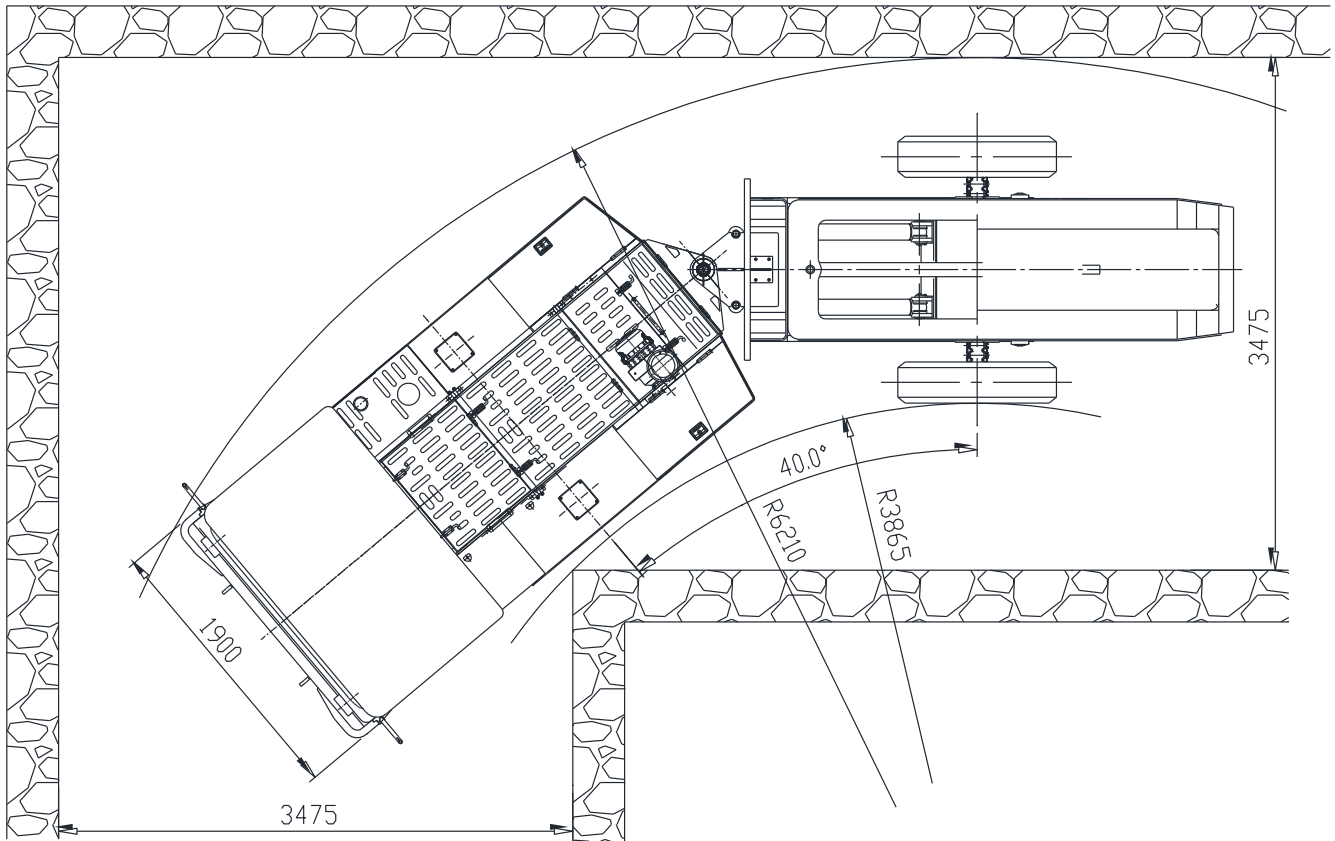
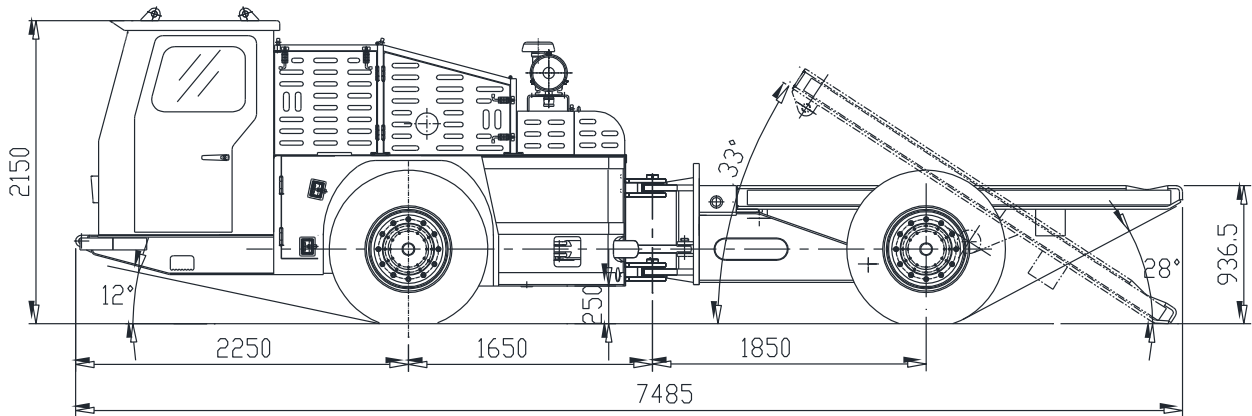
Imaging system

Heating and cooling air conditioning

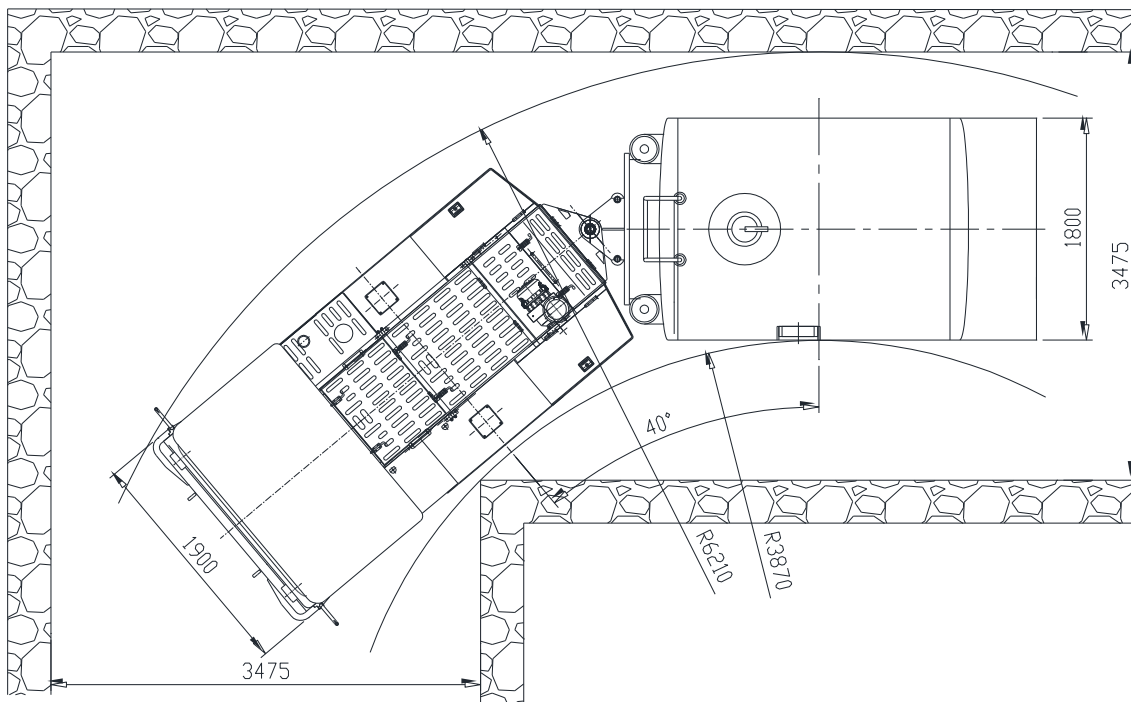
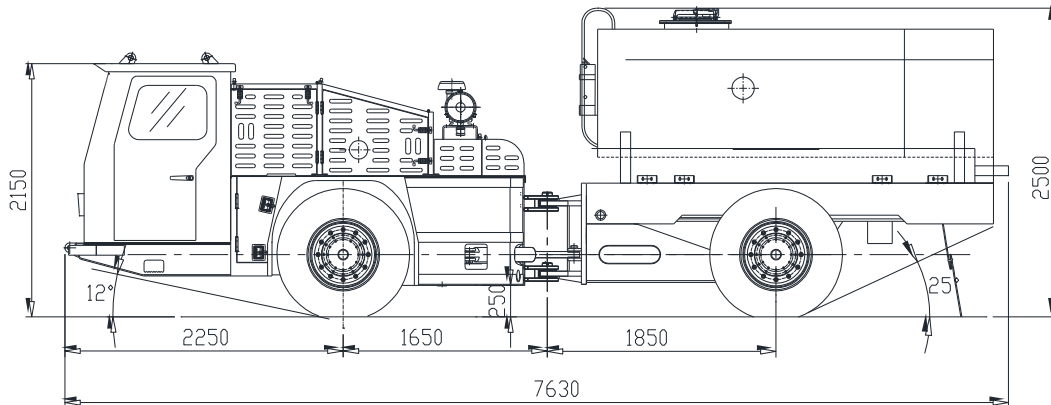




## Dimensional drawing of universal chassis



**Dimensional drawing of universal chassis tanker truck**



***Options***

***Optional compartment***

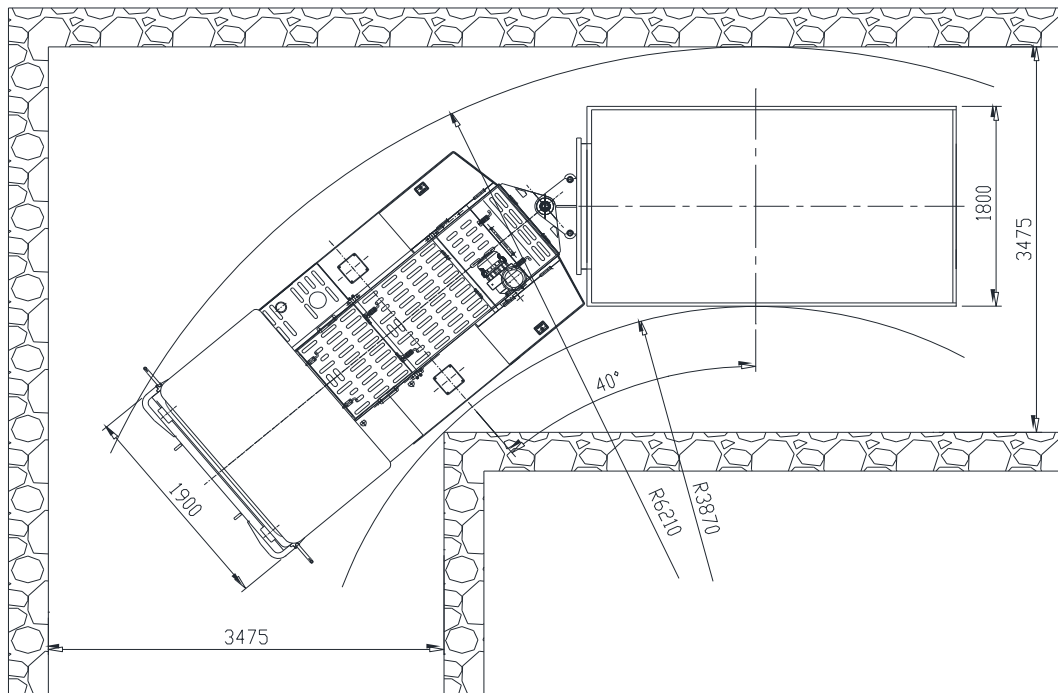
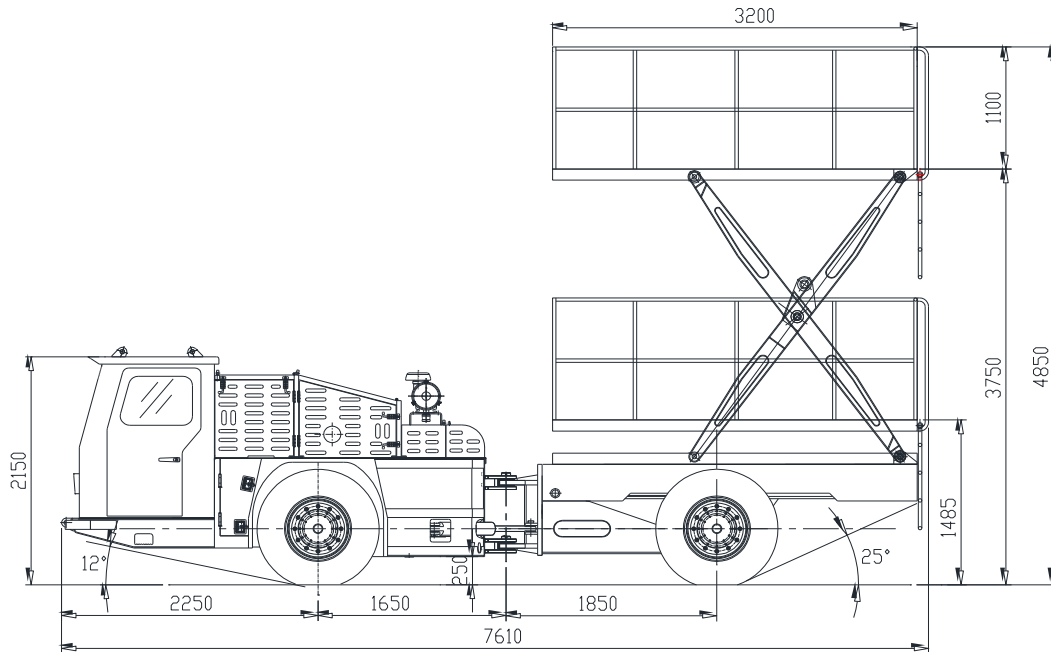
***Oil tank***

***The main technical parameters***

***Volume: 4000 L***

***Refueling range: 30-45 L / min, refueling gun equipped with reel can stretch up to 14 m***

## Dimensional drawing of universal chassis lifting platform



### *Options*

*Optional compartment*

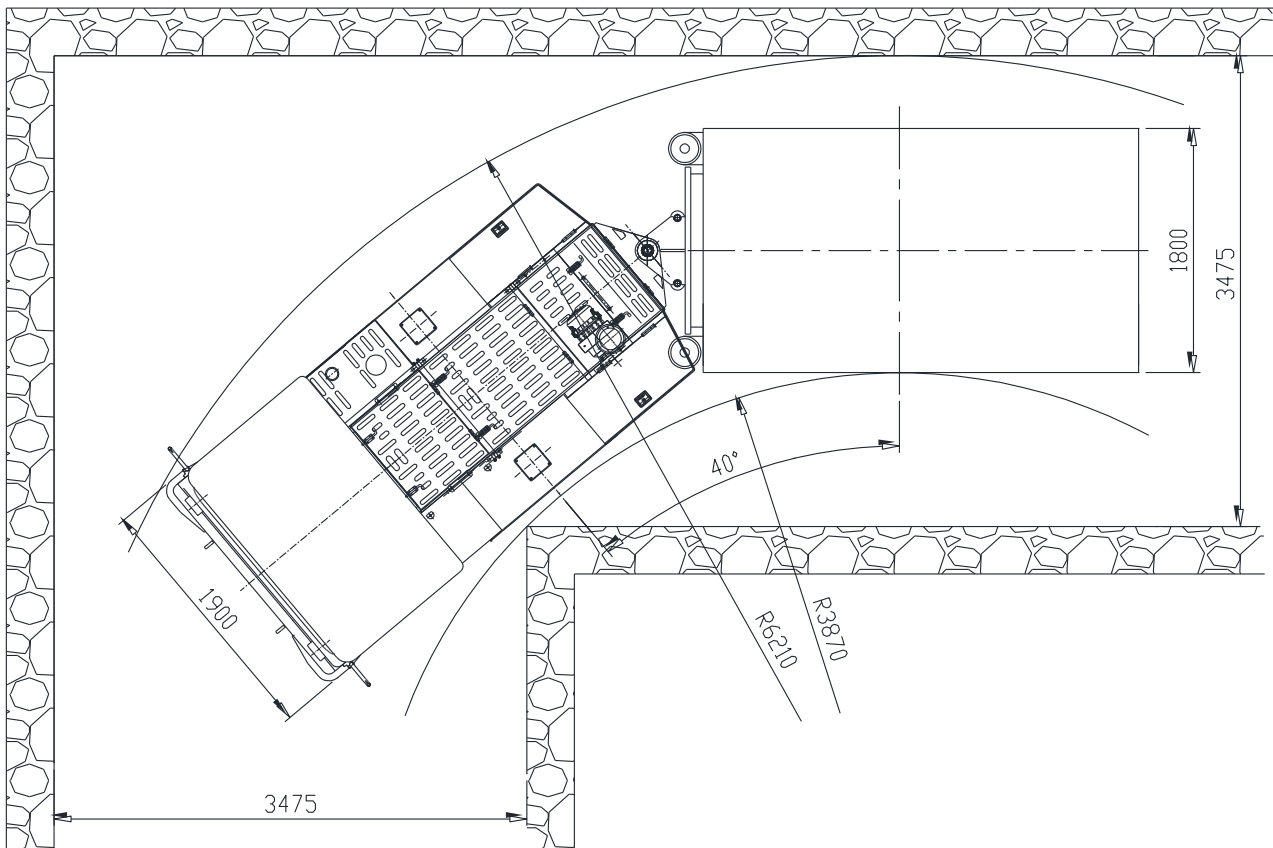
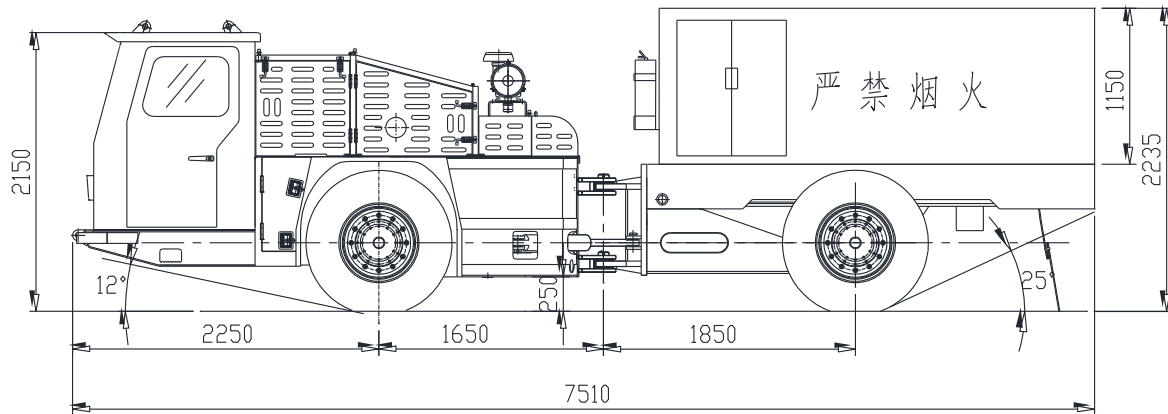
*Scissor lift platform*

*The main technical parameters*

*Rated load: 2T*

*Maximum lifting height: 3750mm*

## Dimensional drawing of universal chassis explosive transport vehicle



### *Options*

*Optional compartment*

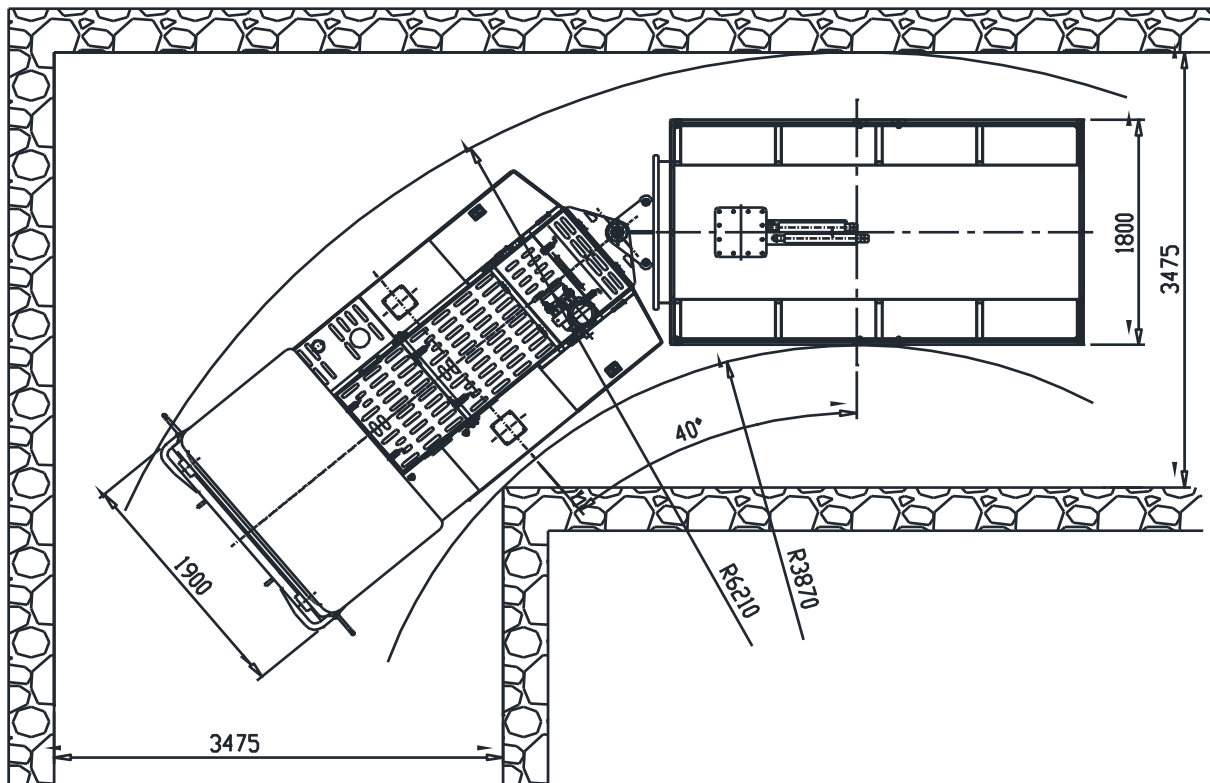
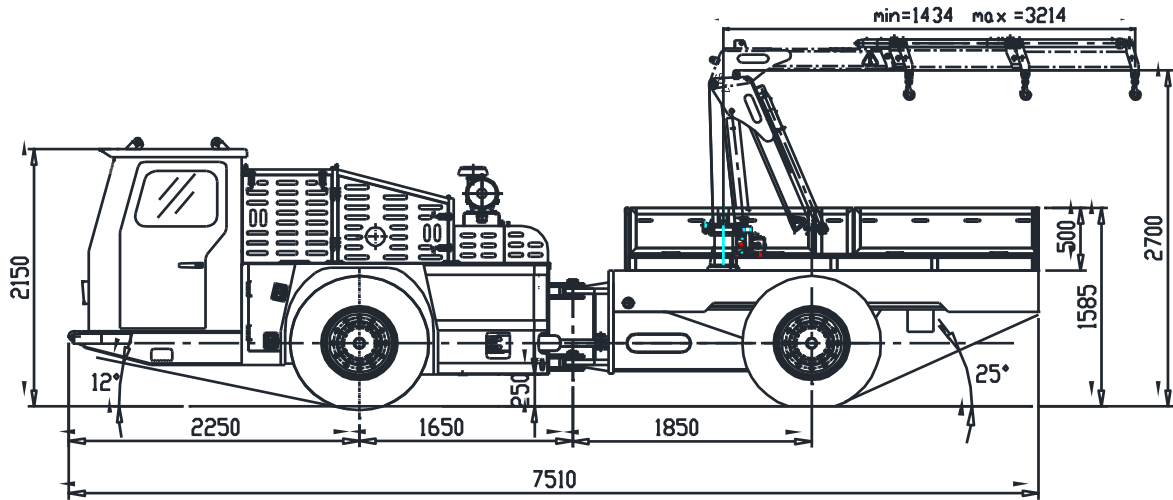
*Explosives carriage*

*Main Technical Parameter*

*Compartment volume: 4 squares*



## Dimensional drawing of general chassis material carrier



### *Options*

*Optional compartment*

*Maintenance compartment*

*The main technical parameters*

*Hoisting capacity: 1.4 T.m*